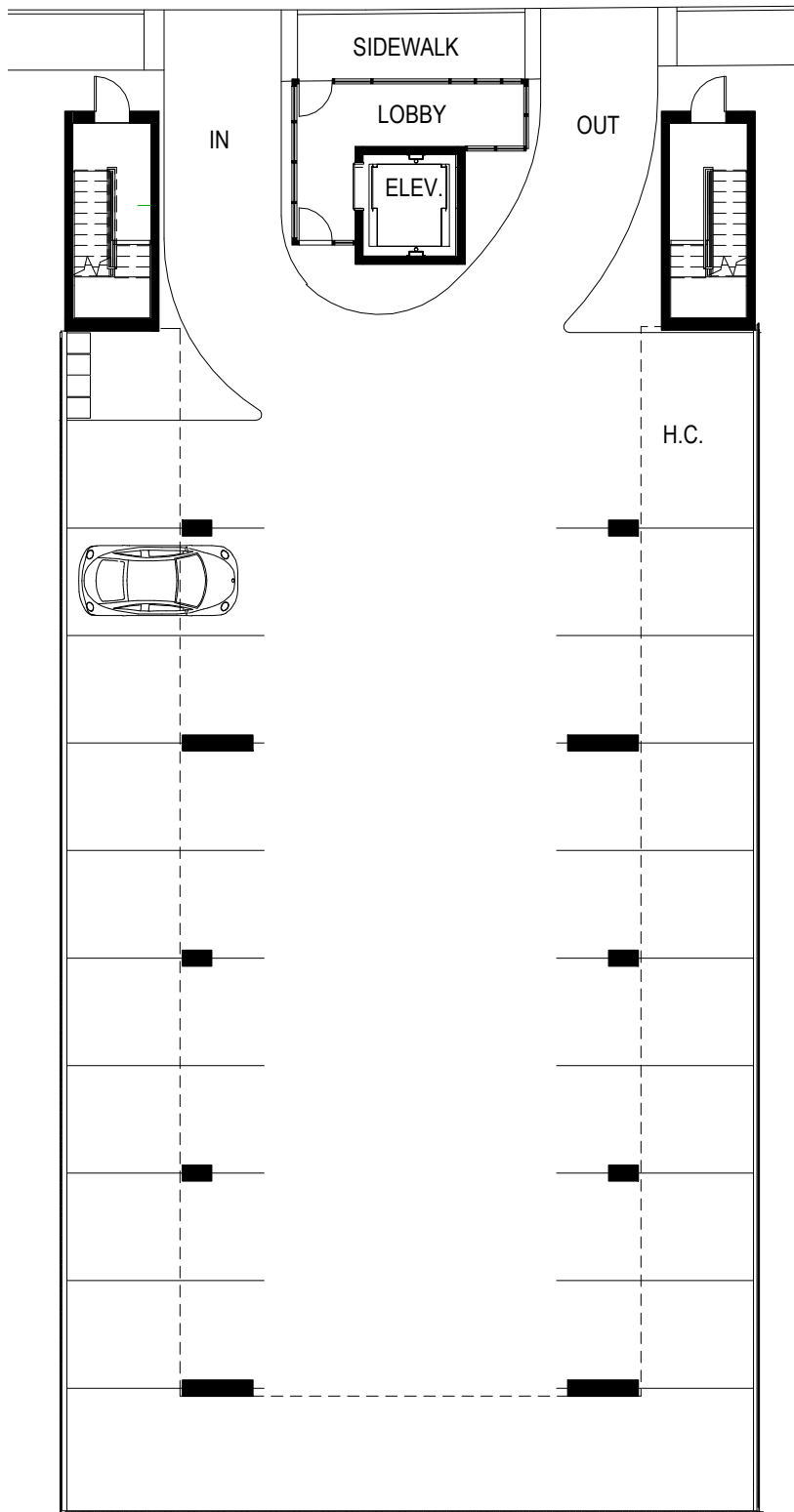


The Overlook

608 West Hill Ave. Knoxville, TN 37902
www.knoxvilleoverlook.com

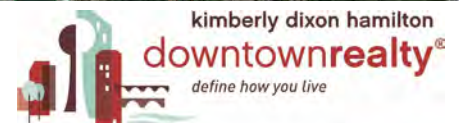


The Overlook is on one of downtown's quieter residential streets and is in the middle of everything that is great about Knoxville. You can park at street level, then enter the secure lobby to ride up to your private balcony. Leave your car behind and walk everywhere.



Lobby and Parking

The information provided is intended for informational purposes only and is not intended to constitute an offer or solicitation. All information contained herein is believed to be accurate but neither the developer nor its agent make any representation, warranty, express or implied, regarding anything contained within this document. Prices, locations, features, finishes, specifications, community plans and availability are subject to change without notice. All maps, floor plans, drawings and elevations are conceptual artist renderings, are not to scale and are for informational purposes only. All dimensions and specifications, including square footage, are estimates. Buyers should independently verify any information provided herein.



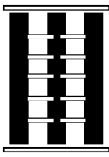
o. 865-588-5535 m. 865.405.8970
kimberly@knoxvilledowntownrealty.com

THE OVERLOOK

1

Architects Wright



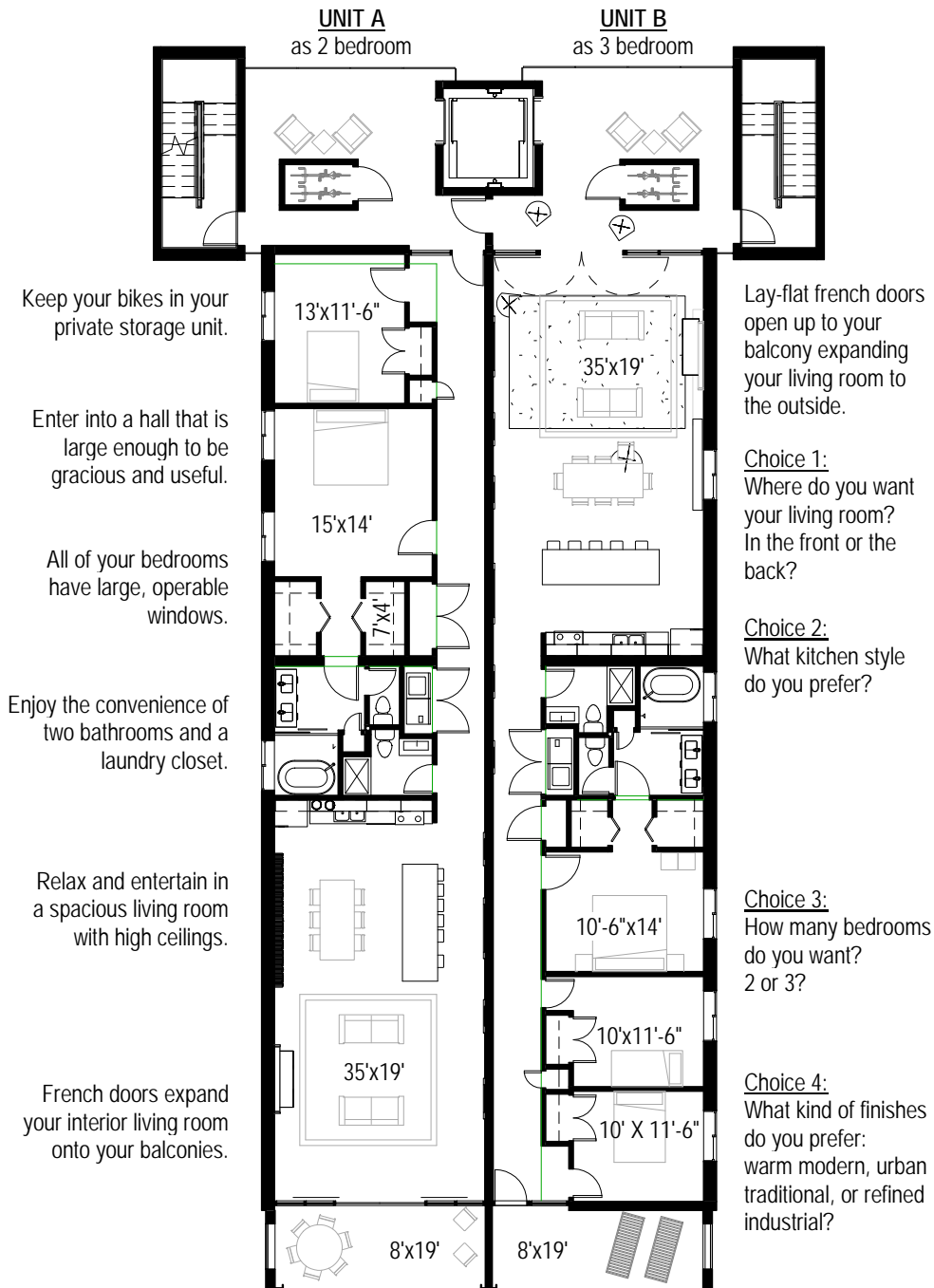


The Overlook

608 West Hill Ave. Knoxville, TN 37902

www.knoxvilleoverlook.com

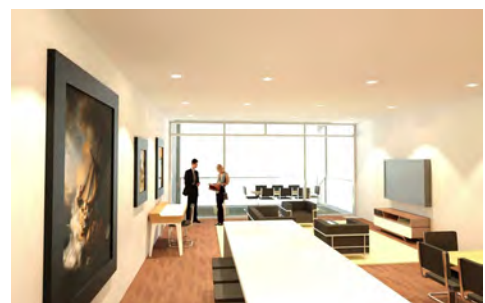
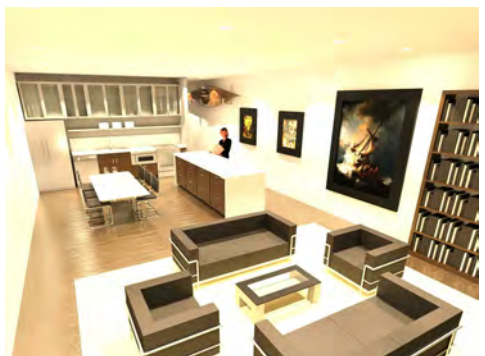
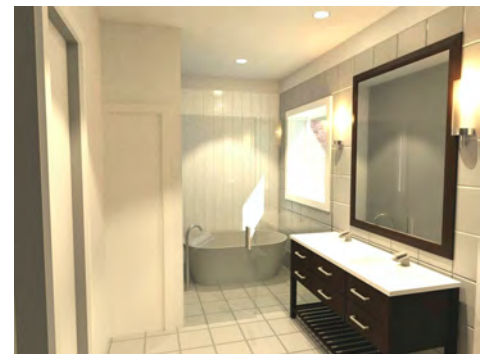
Your private elevator entrance opens onto your private front balcony so you can greet your guests and enjoy your neighborhood.



Units A and B

1650 sq ft interior, 450 sq ft exterior, 2100 sq ft total
Includes a dedicated parking space.
Starting at \$577,500

The information provided is intended for informational purposes only and is not intended to constitute an offer or solicitation. All information contained herein is believed to be accurate but neither the developer nor its agent make any representation, warranty, express or implied, regarding anything contained within this document. Prices, locations, features, finishes, specifications, community plans and availability are subject to change without notice. All maps, floor plans, drawings and elevations are conceptual artist renderings, are not to scale and are for informational purposes only. All dimensions and specifications, including square footage, are estimates. Buyers should independently verify any information provided herein.



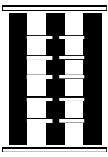
o. 865-588-5535 m. 865.405.8970
kimberly@knoxvilledowntownrealty.com

THE OVERLOOK

2

Architects Wright





The Overlook

608 West Hill Ave. Knoxville, TN 37902
www.knoxvilleoverlook.com

Your private elevator entrance opens onto your private front balcony so you can greet your guests and enjoy your neighborhood.



Four bedrooms offers spacious accommodations for a large family, guests or the flexibility of a home office.



The kitchen is the heart of the living room.



Penthouse

Own the entire top floor and customize it to your lifestyle.
3,300 sq ft interior, 900 sq ft exterior, 4,200 sq ft total
Includes two parking spaces.
Starting at \$1,320,000

The information provided is intended for informational purposes only and is not intended to constitute an offer or solicitation. All information contained herein is believed to be accurate but neither the developer nor its agent make any representation, warranty, express or implied, regarding anything contained within this document. Prices, locations, features, finishes, specifications, community plans and availability are subject to change without notice. All maps, floor plans, drawings and elevations are conceptual artist renderings, are not to scale and are for informational purposes only. All dimensions and specifications, including square footage, are estimates. Buyers should independently verify any information provided herein.



o. 865-588-5535 m. 865.405.8970
kimberly@knoxvilledowntownrealty.com

THE OVERLOOK

3

Architects Wright

