



Kitchen, Dining Area and Living Area layout shown in Unit A.



French doors expand your interior living room onto your balconies.



Kitchen layout shown in Unit B.



Master Bath

The Overlook

608 WEST Hill Ave. Knoxville, TN 37902
www.knoxvilleoverlook.com

kimberly dixon hamilton
downtownrealty®
define how you live
o. 865-588-5535 m. 865.405.8970
kimberly@knoxvilledowntownrealty.com

The information provided is intended for informational purposes only and is not intended to constitute an offer or solicitation. All information contained herein is believed to be accurate but neither the developer nor its agent make any representation, warranty, express or implied, regarding anything contained within this document. Prices, locations, features, finishes, specifications, community plans and availability are subject to change without notice. All maps, floor plans, drawings and elevations are conceptual artist renderings, are not to scale and are for informational purposes only. All dimensions and specifications, including square footage, are estimates. Buyers should independently verify any information provided herein.

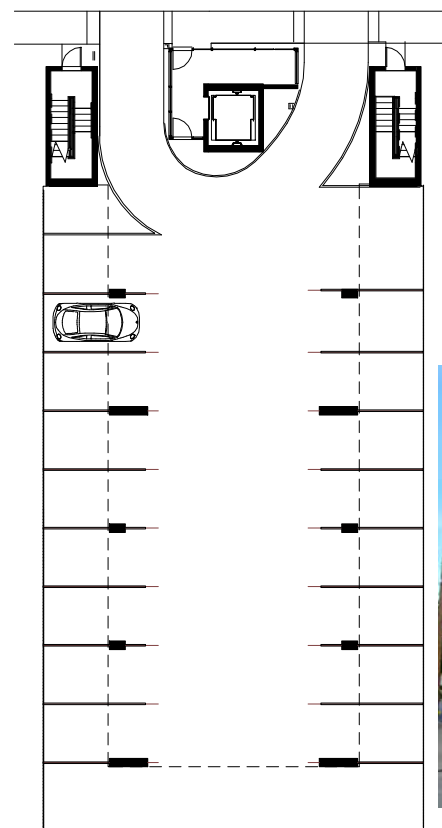
The Overlook

608 WEST Hill Ave. Knoxville, TN 37902
www.knoxvilleoverlook.com



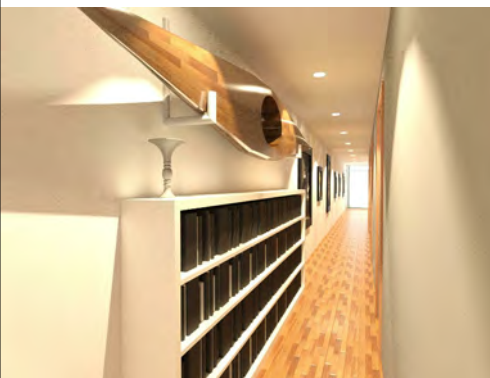


15 MIN. WALK



Lobby and Parking

The Overlook is on one of downtown's quieter residential streets and is in the middle of everything that is great about Knoxville. Park at the street level and enter the secure lobby to ride up to your private balcony. Leave your car behind and walk everywhere.



UNIT A
as 2 bedroom with the
Living Room on the back.

Keep your bikes in your private storage unit.

Enter into a hall that is large enough to be gracious and useful.

All of your bedrooms have large, operable windows.

Enjoy the convenience of two bathrooms and a laundry closet.

The kitchen is the heart of the living room.

Relax and entertain in a spacious living room with high ceilings.

French doors expand your interior living room onto your balconies.

UNIT B
as 3 bedroom with the
Living Room on W. Hill Avenue.

Lay-flat french doors open up to your balcony expanding your living room to the outside.

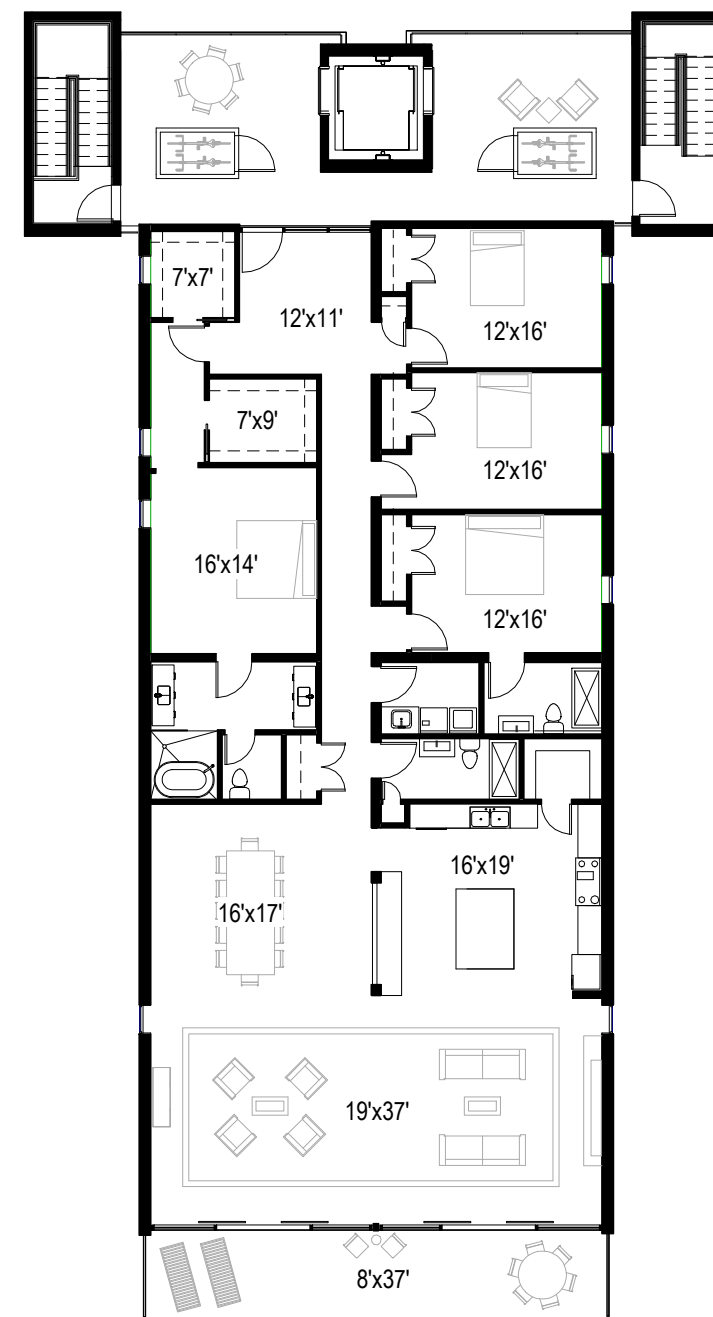
Choice 1:
Where do you want your living room?
In the front or the back?


Choice 2:
What kitchen style do you prefer?

Choice 3:
How many bedrooms do you want?
2 or 3?

Choice 4:
What kind of finishes do you prefer:
Warm Modern, Urban Traditional, or Refined Industrial?

 **Unit A & Unit B** 1650 sq ft interior, 450 sq ft exterior, 2100 sq ft total. Starting at \$594,000 each. Includes a dedicated parking space.



 **Penthouse** Own the entire top floor and customize it to your lifestyle. 3,300 sq ft interior, 900 sq ft exterior, 4,200 sq ft total. Starting at \$1,320,000. Includes two parking spaces.

